

Issue date
4 March 2013

References affected
All LCA / RCA / UCA



FULL SPEC. FULL STOP.™

TECHNICAL Bulletin.

Caliper Core Rejections

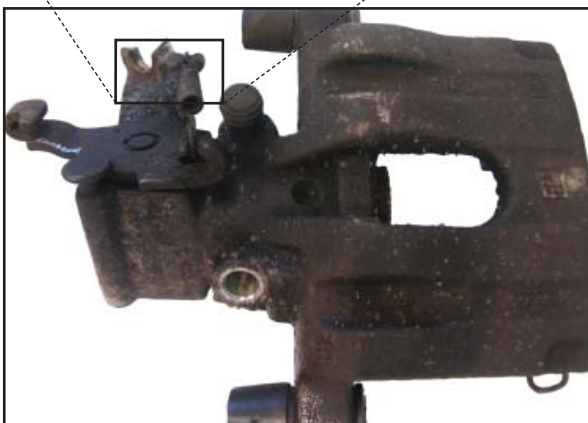
Recently we have noted an increase in the number of Caliper returns that have had to be rejected due to the mounting holes having been cut or damaged at the point of removal.

(examples shown)

These units are unusable and therefore cannot be accepted back for credit against the surcharge.

Please ensure that when taking back an exchange caliper, the unit is inspected for damage and rejected at source where necessary.

*Damaged / Cut Brackets:
examples LCA / RCA144, 194, 207, 219*



*Damaged / Cut Pin Holes:
examples LCA / RCA 348, 365, UCA 230*

